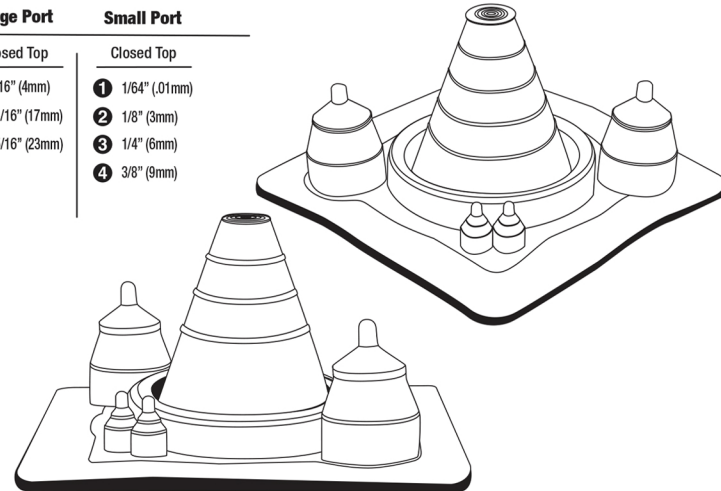


# Solar Multi-Port-MR Master Flash®

## Solar Multi-Port MR Size and Trimming

SMP-MR Pipe Range	SMP-MR	Large Port	Small Port
	Closed Top	Closed Top	Closed Top
1 Closed 0" - 1/2" (0-12mm)	1 Closed 0" - 1/2" (0-12mm)	1 3/16" (4mm)	1 1/64" (.01mm)
2 5/8" - 11/16" (15-17mm)	2 5/8" - 11/16" (15-17mm)	2 11/16" (17mm)	2 1/8" (3mm)
3 1-1/8" - 1-1/4" (28-31mm)	3 1-1/8" - 1-1/4" (28-31mm)	3 15/16" (23mm)	3 1/4" (6mm)
4 1-1/2" - 1-5/8" (38-41mm)	4 1-1/2" - 1-5/8" (38-41mm)	4 1-1/2" (11mm)	4 3/8" (9mm)
5 1-11/16" - 1-15/16" (42-49mm)	5 1-11/16" - 1-15/16" (42-49mm)		

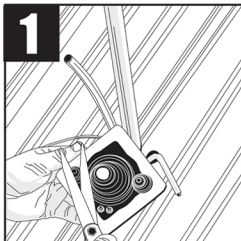


**\*\*Base Dimension: Solar Multi-Port MR 4-1/2" (114mm)**

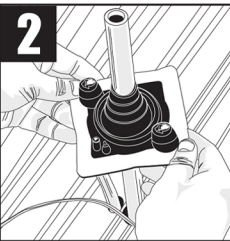
\* Find pipe size in table and trim Solar Multi-Port MR Master Flash® as shown on outline. \* Cut the flashing at least 20% less then the pipe Outer Diameter

**5 Easy Steps Installation Materials:** Solar Multi-Port MR Master Flash® | Fasteners | Washers | Snips/Scissors | Measuring Tape | Marker/Pencil | Sealant

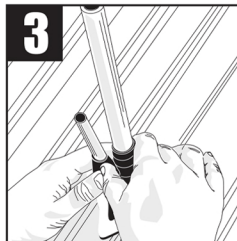
### Measure & Trim



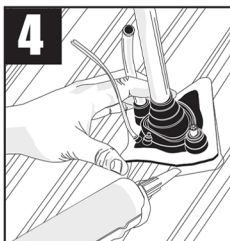
### Slide



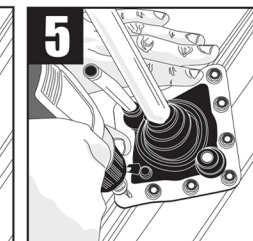
### Form



### Seal



### Complete



Roof Pitch Calculator  
<https://rpc.aztecwasher.com>

Note: Properly installed the base with Master Seal® Bonded Washers and fasteners. Fasteners should be 1" - 1-1/2" apart around the entire base for a tight secure seal.



**Installation Video:** <http://www.aztecwasher.com/installationvideos>

Solar Multi-port MR Master Flash® is a product of Aztec Washer Company 4/2020